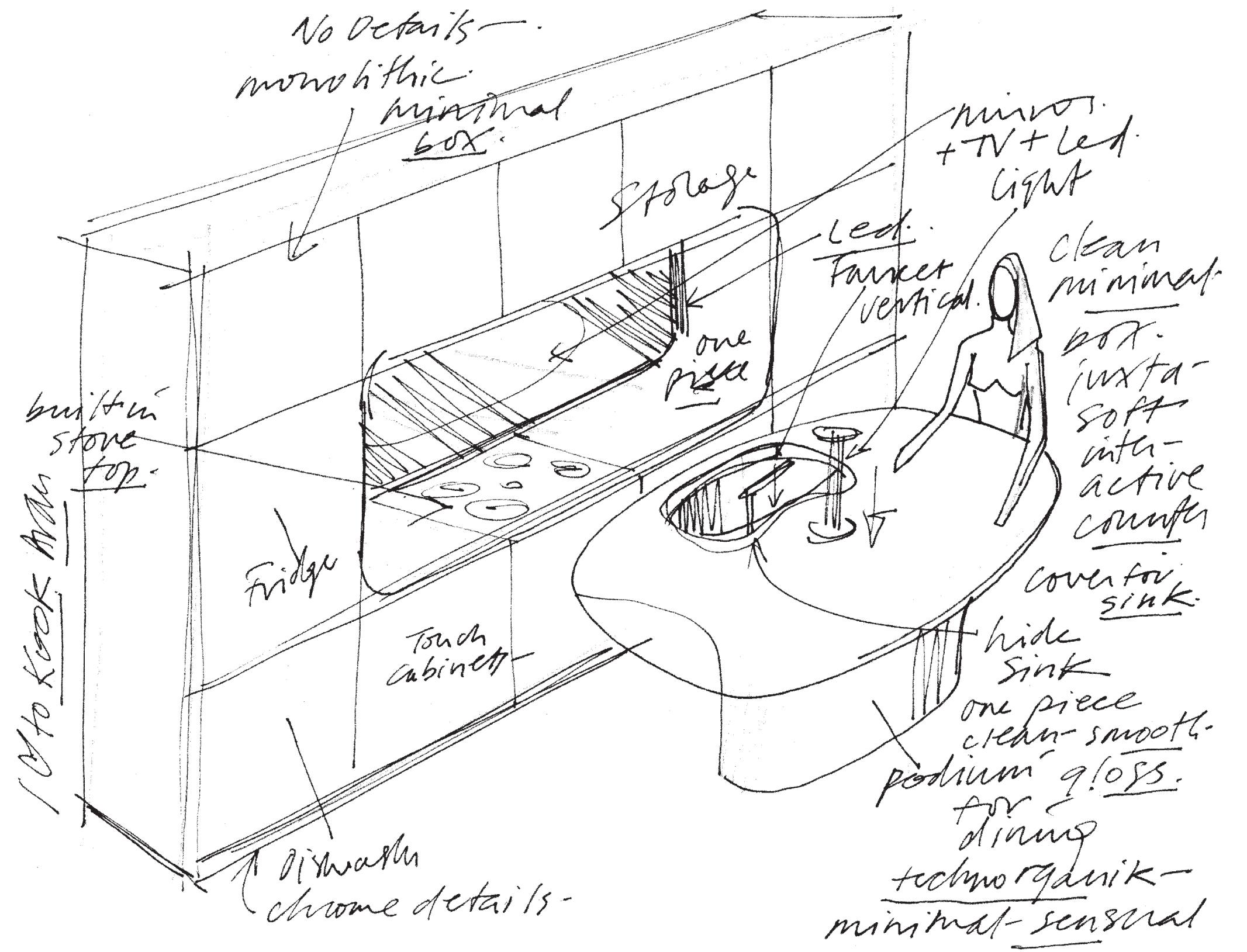


KAKABA

[r]

[rastelli]



Karan

"The kitchen is the heart of the home. With that in mind, I took what is often a banal archetype of kitchenware and turn it into an elegant communal experience. The concept revolves around an open pedestal island. The tapered curve of the island invites friends and family to pull up a seat. Both faucet and LED light retract into the counter creating a flush surface. The easy addition of multi-purpose cutting board over the sink creates a solid dining space. Soft curves continue on the wall unit. A rounded cutout creates a cooking and prep area. The inset back-lit mirror is edged by ambient lighting LEDs. C-channel opening cabinets hide refrigerator, oven and pantry storage. The use of glass, in matt or glossy finish, for doors, as well as the ceramic, helps to make a model which is already original and recognizable even more exclusive."

Karim Rashid





"Don't chase fame.
Chase originality,
chase innovation,
chase beauty".

Cartman







Sublimely minimalist shapes and forms.
Homage to design: less is more.









Diversity of style;
it's not the time for compromise.







Provocation in architecture:
it's the moment for emphatic personal choices, fed by bold creativity.



The maximum expression of luxury,
toned down with refined elegance
in accessories with a graphical line,
in a contemporary redefinition
of the concept of opulence.









Unexpected surfaces,
Light cannot exist without shadows,
Well-being also comes
from visual pleasure.







Learn, live, dream.
Metropolitan imprint with a welcoming and comfortable air.





The kitchen area is characterized by teal upper cabinets and white lower cabinets. A thick wooden countertop extends over the lower cabinets, supported by two purple, tiered stools. On the countertop, there is a watermelon, a stack of plates, and a small lamp. The kitchen is equipped with a sink, a stove, and a faucet. Two pendant lights with glass shades hang above the countertop. A shelf above the countertop holds various kitchen items, including a kettle and a coffee maker. A large window in the background provides a view of a balcony with a pool and trees.

A large white shelving unit with a grid pattern holds various glassware and ceramics. The items include vases, bottles, teapots, and bowls. The shelving unit is positioned in front of a large window that offers a view of the outdoors. The floor is a light-colored concrete or stone.

The living area features two white, modern armchairs and a round white coffee table. A tall, black floor lamp stands next to the chairs. A patterned rug with a circular, geometric design is placed on the floor. In the background, there is a white cabinet or wardrobe. The overall aesthetic is clean and contemporary.

Warm and tactile textures
for a mood of soft relaxation.
Eclecticism is expressed
by the enveloping privacy
of the most intimate corners.









A celebration of fluidity and plasticity.
Peace and quiet as the peak of luxury.





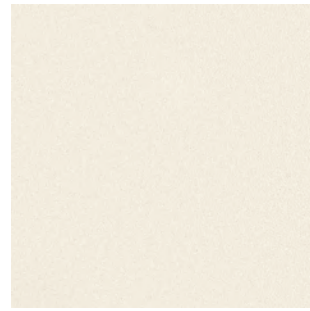


Ultrasensual, versatile and tireless design.
Harmony comes from a coexistence of strength and softness.





LAMINAM



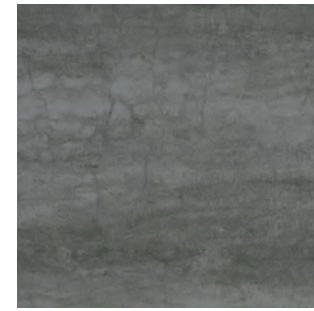
Collection neve
Collection Snow
Collection nieve
Collection neige
Collection Schnee
Collection снег



Collection fumo
Collection Smoke
Collection humo
Collection fumée
Collection Rauch
Collection дым



Collection Tortora
Collection Dove gray
Collection ceniza
Collection cappuccino
Collection Taubengrau
Collection сизый



Pietra di Savoia
Stone Pietra di Savoia
Piedra de Savoia
Pierre de Savoie
Stein von Savoia
Савойский камень



Fokos roccia
Fokos stone
Fokos roca
Fokos roche
Fokos Felsen
Фокос скала



Fokos sale
Fokos salt
Fokos sal
Fokos sel
Fokos Salz
Фокос соль



Fokos terra
Fokos earth
Fokos tierra
Fokos terre
Fokos Erde
Фокос земля



Oxide moro mat
Oxide moro mat
Oxide moro mat
Oxyde brun mat
Oxide Dunkelbraun matt
Оксид темно-коричневый матовый

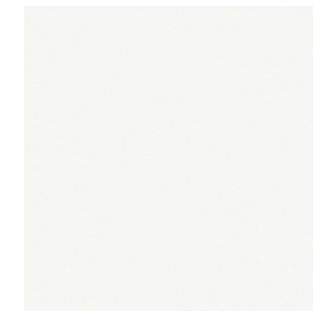


Oxide nero
Oxide black
Oxide negro
Oxyde noir
Oxide Schwarz
Оксид черный

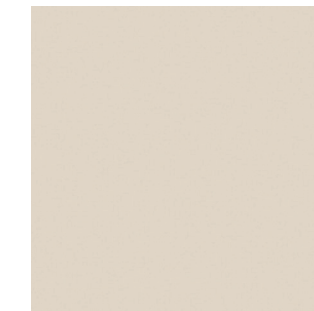


Oxide bianco
Oxide white
Oxide blanco
Oxide blanc
Oxide Weiss
Оксид белый

VETRO LUCIDO E OPACO



bianco neve



Avorio
Ivory
Marfil
Ivoire
Elfenbein
Слоновая кость



Grigio chiaro
Light grey
Gris claro
Gris clair
Hell grau
Серый светло



Tortora
Dove grey
Ceniza
Tourterelle
Taubengrau
Бледно коричневый



Grafite
Graphite
Grafito
Graphite
Graphit
Серый графит



Verde chiaro
Light green
Verde claro
Vert clair
Hellgrün
Светло зелёный



Marrone
Brown
Marròn
Marron
Braun
Коричневый



Nero
Black
Negro
Noir
Schwarz
Черный

PROJECT COORDINATOR
RASELLI Technical Department

ART DIRECTION
Ulisse Narcisi

PHOTOGRAPHY
Nerokubo

GRAPHIC DESIGN
Lara Santin/Nerokubo

STYLING
Lara Santin/Nerokubo

PHOTOLITHOGRAPHS
Sincromia

PRINTING
Sincromia

[r]
[rastelli]

Zona industriale frazione Casoli - 64032 - Atri (TE) Italy
Italia: Tel. +39 085 87115487 - Fax +39 085 87115490
www.rastellicucine.it - info@rastellicucine.it



75MP1854

